

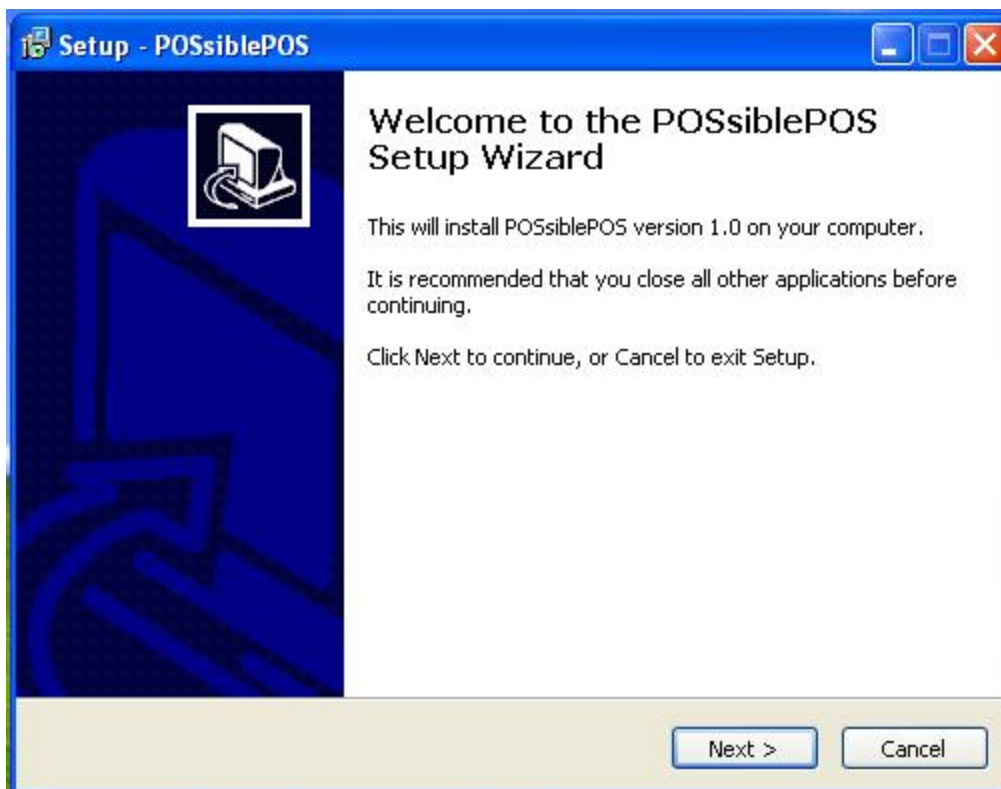
POSSIBLE POS INSTALLATION GUIDE

Version 2.0.0.1

Installation Guide

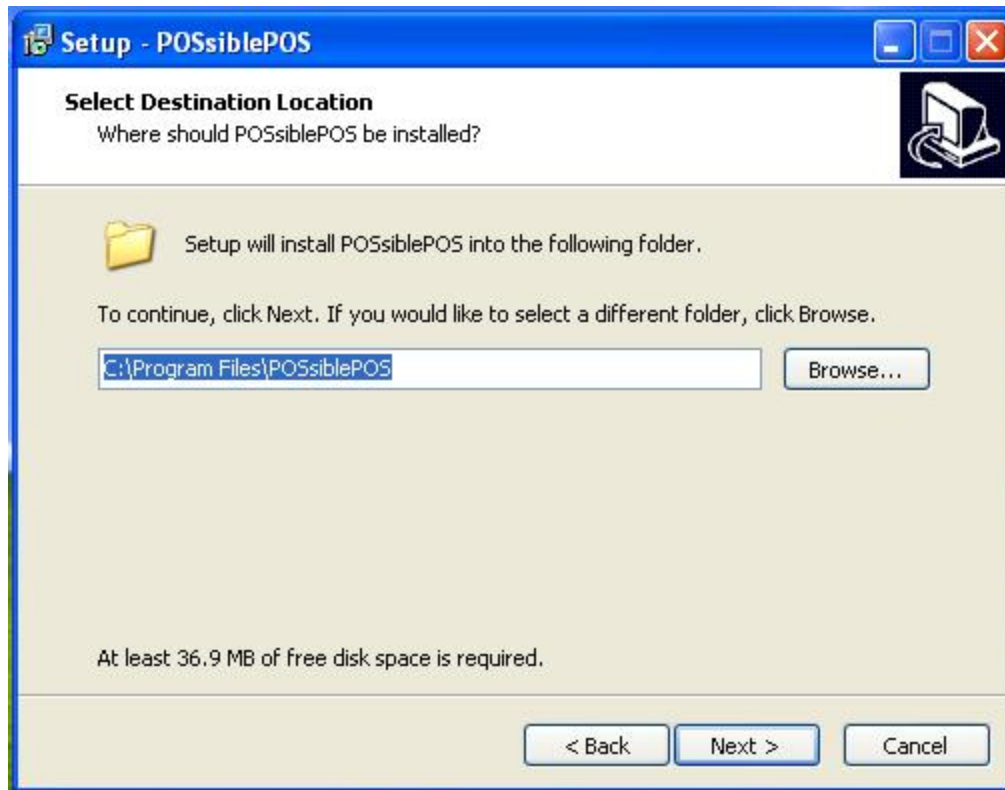
This document will help you install POSSiblePOS software in your system.

1. Double click on the setup.
2. Click on the Next button.

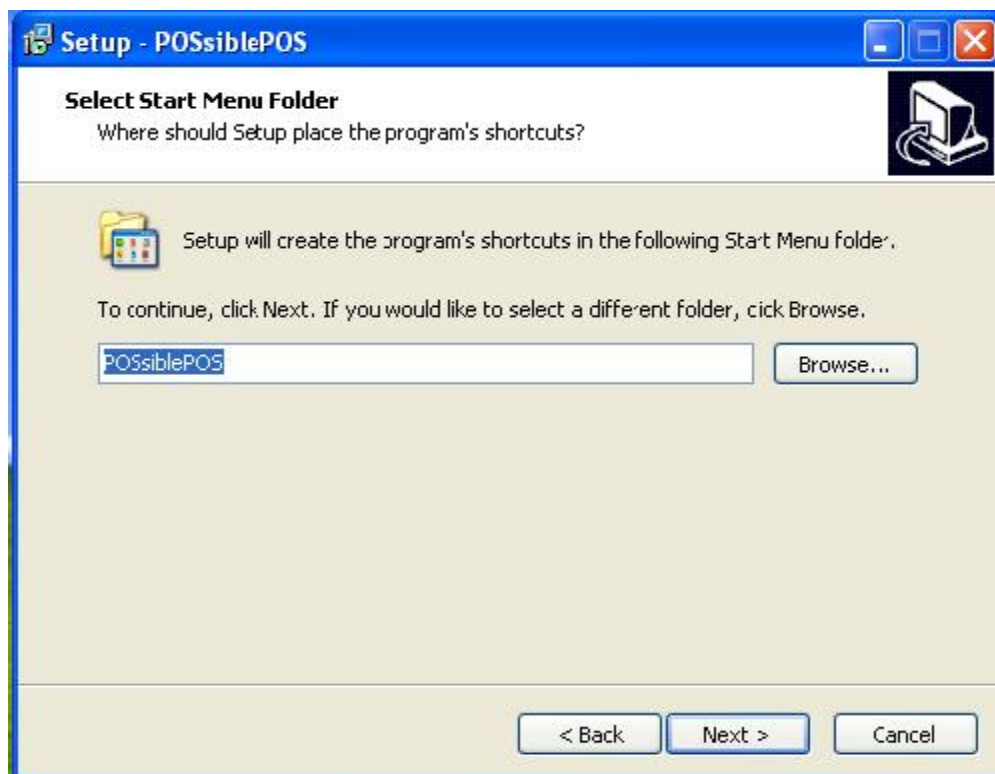


3. Again, click on the Next button.

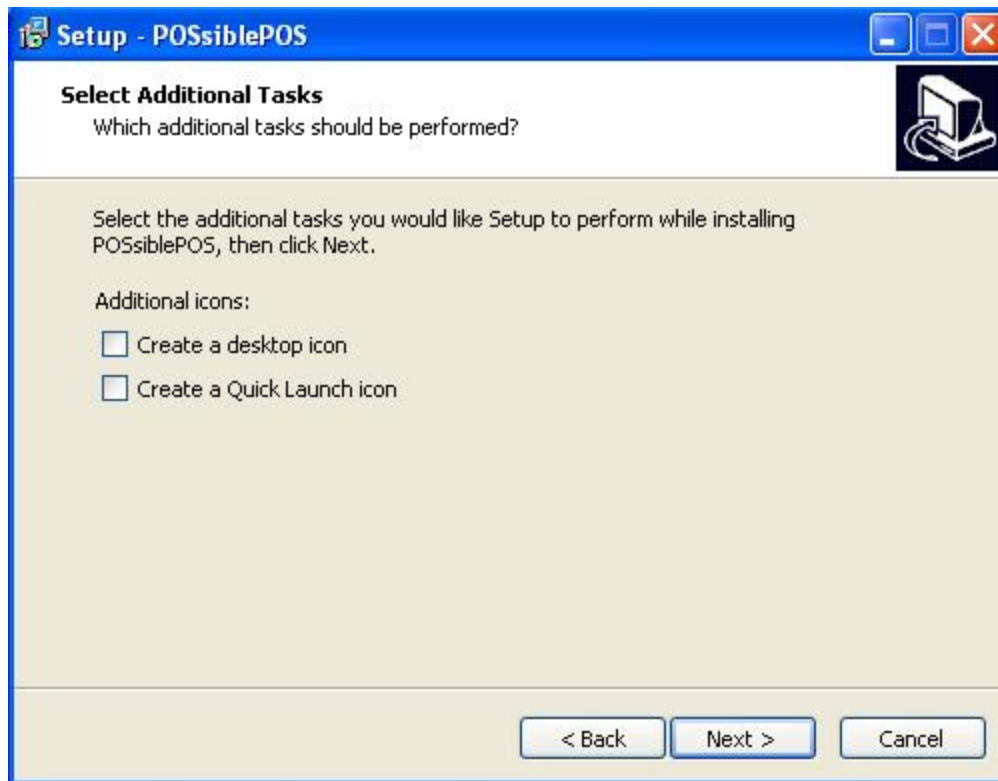
You can change the destination directory using following screen.



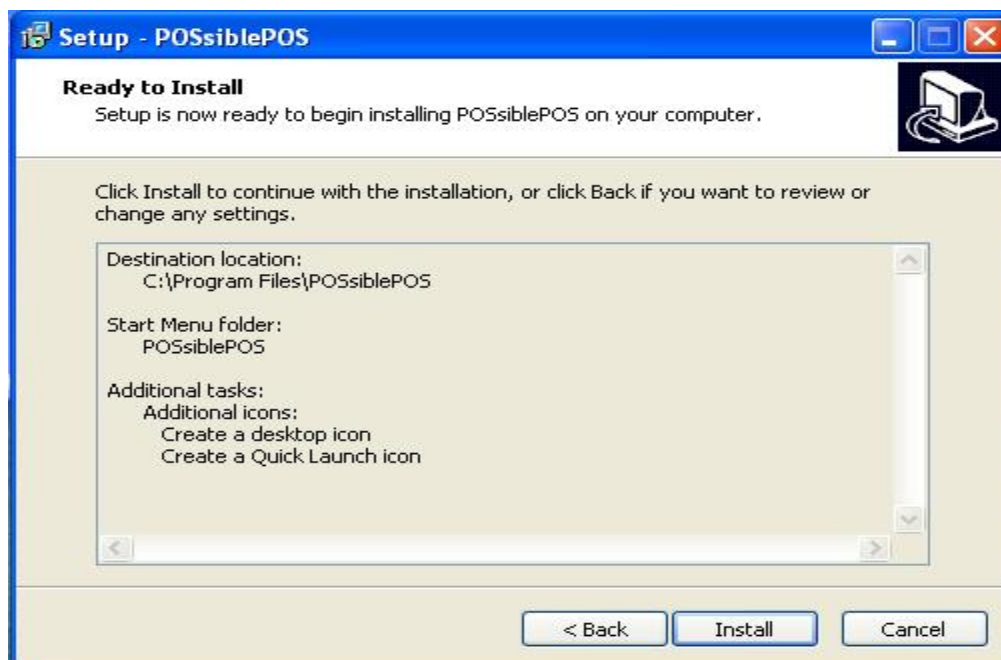
4. Click on the Next button.



5. If you want setup program to create a shortcut icon on desktop after completion of installation then select the “Create a desktop icon” check box. Then click on Next button.

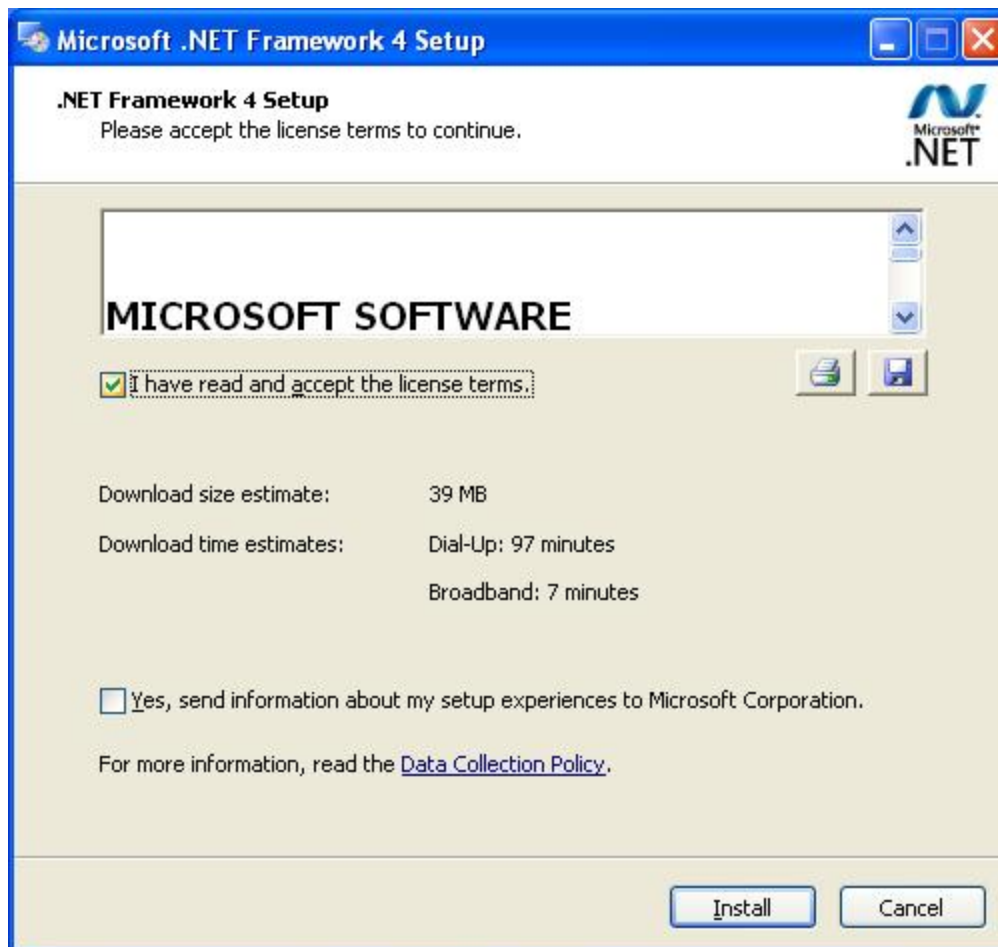


6. Click on the Install button.

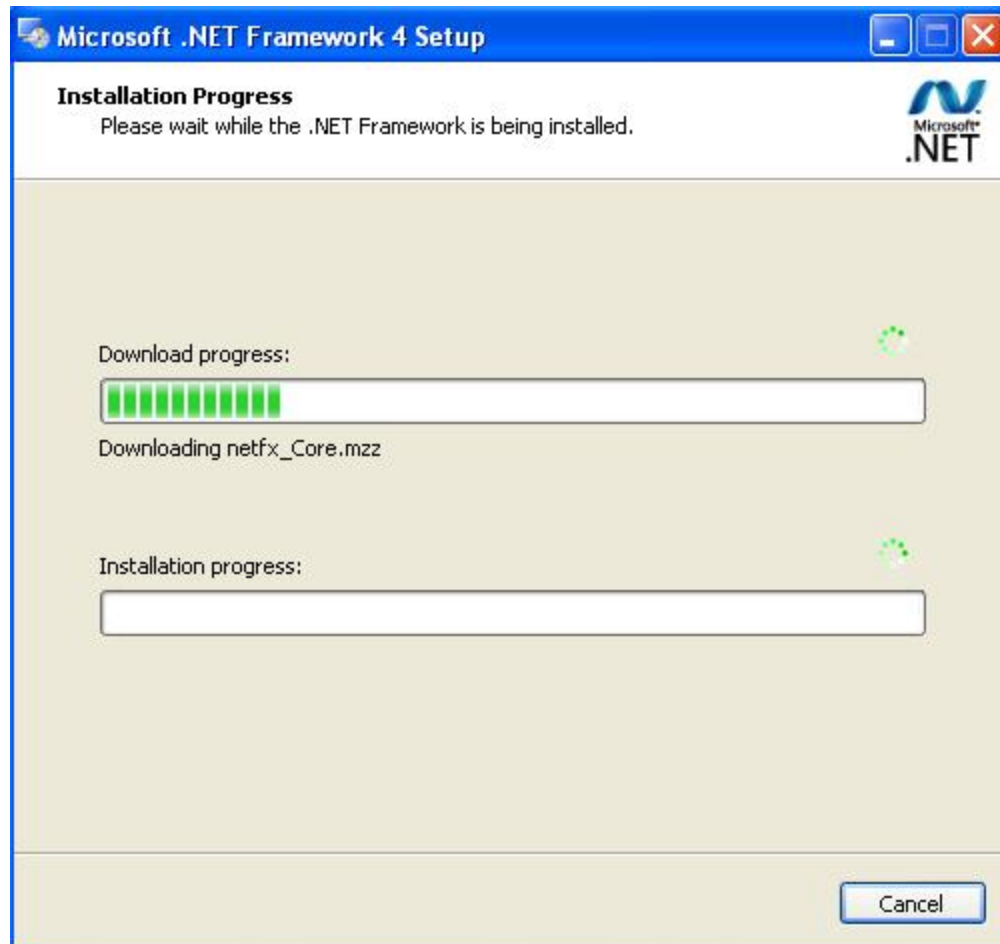


Note:- This software requires .NET Framework 4.0, the setup program will check the system for the existence of .Net Framework 4.0 and will install if required. Below are few steps to install the .Net Framework 4.0

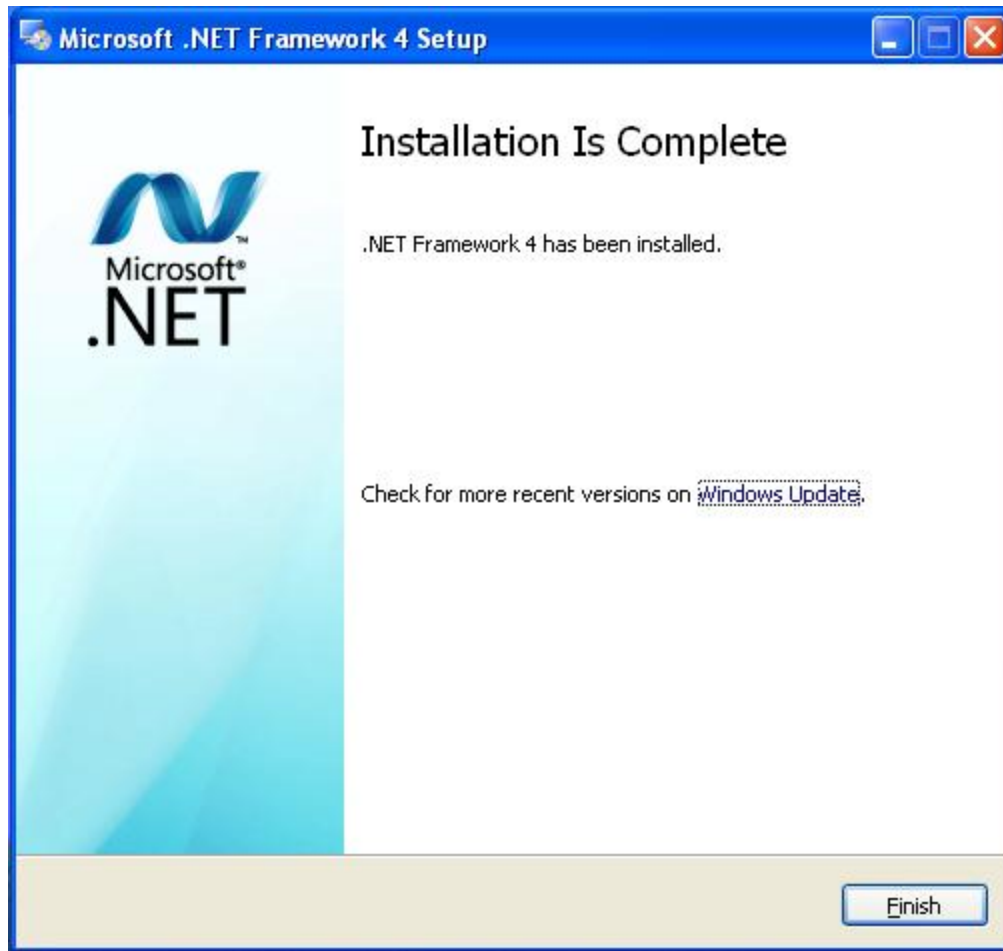
7. Click the “I have read and accepted the license terms” to continue. Then click the Install button.



Note:- Please wait till “.NET Framework 4 Setup” installation process get completed.

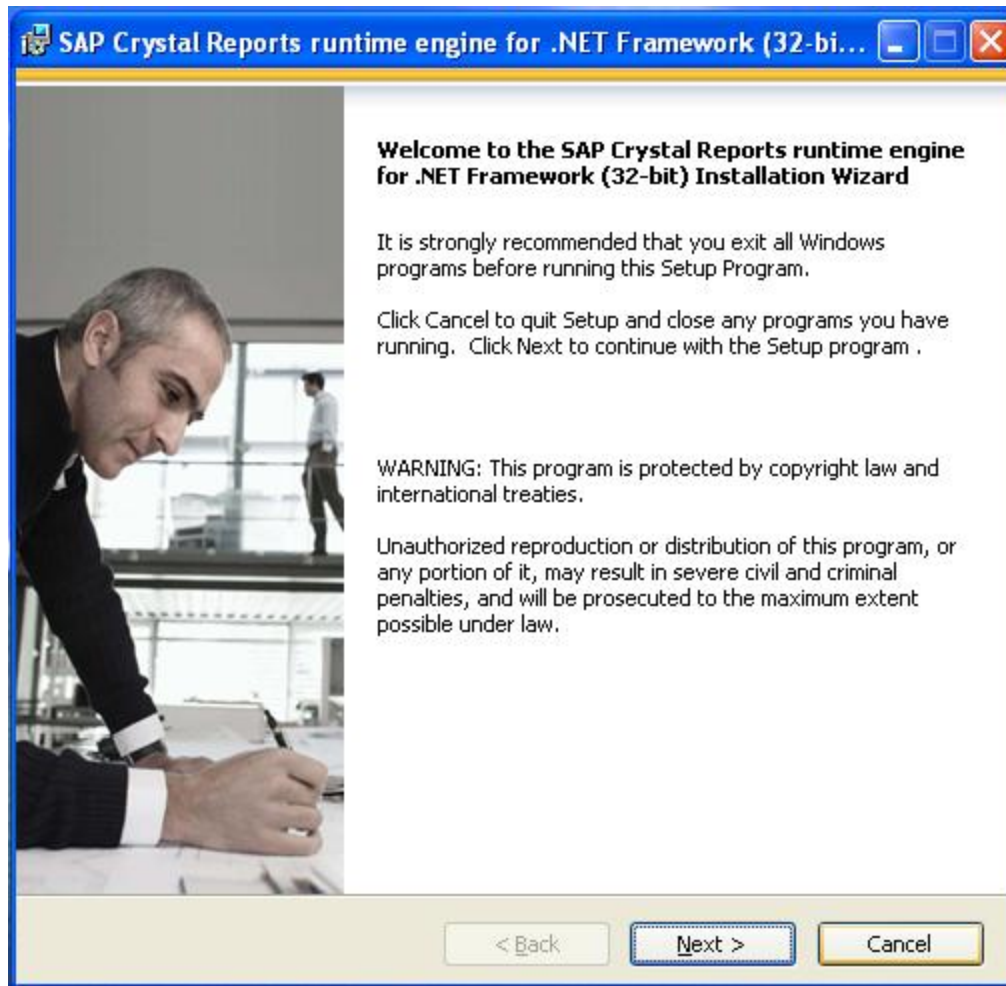


8. Click on the Finish button.

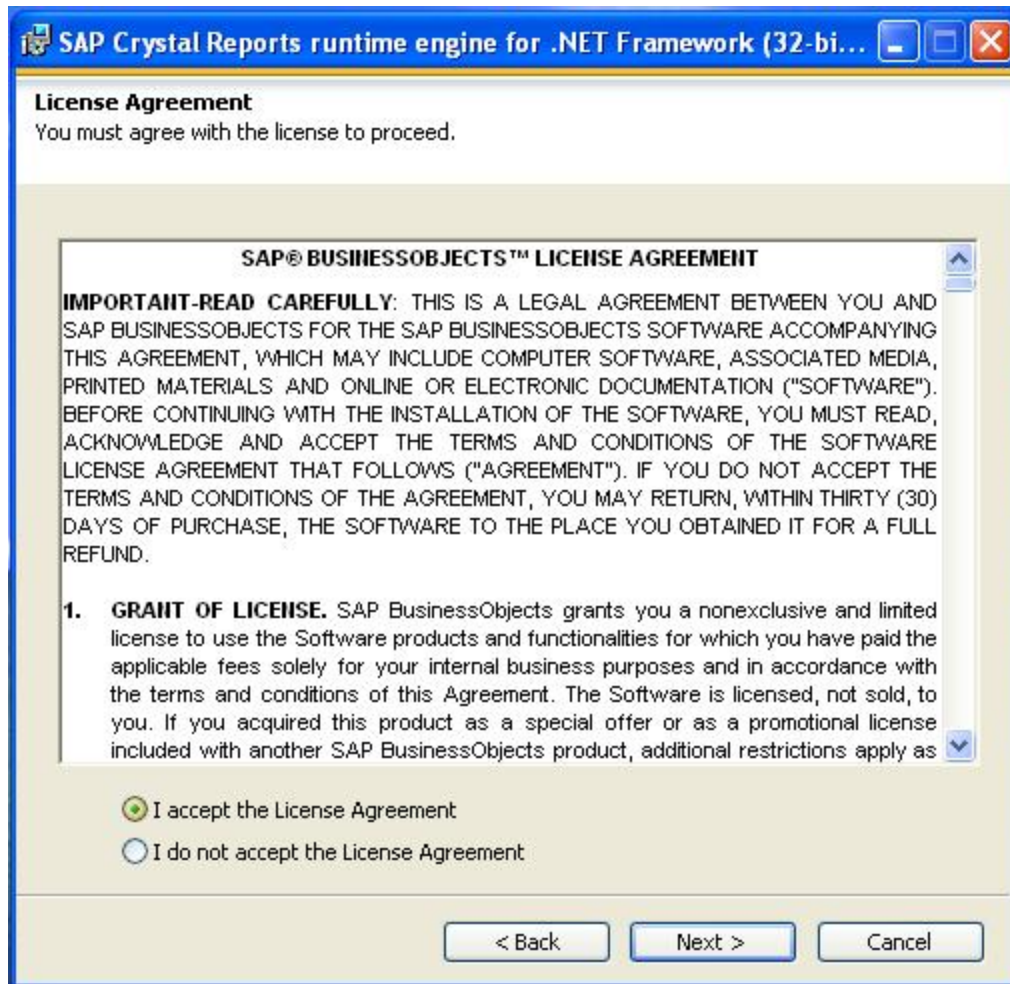


Note:- This software requires Crystal Reports, the setup program will check for the existence of the Crystal Reports and will install if required.

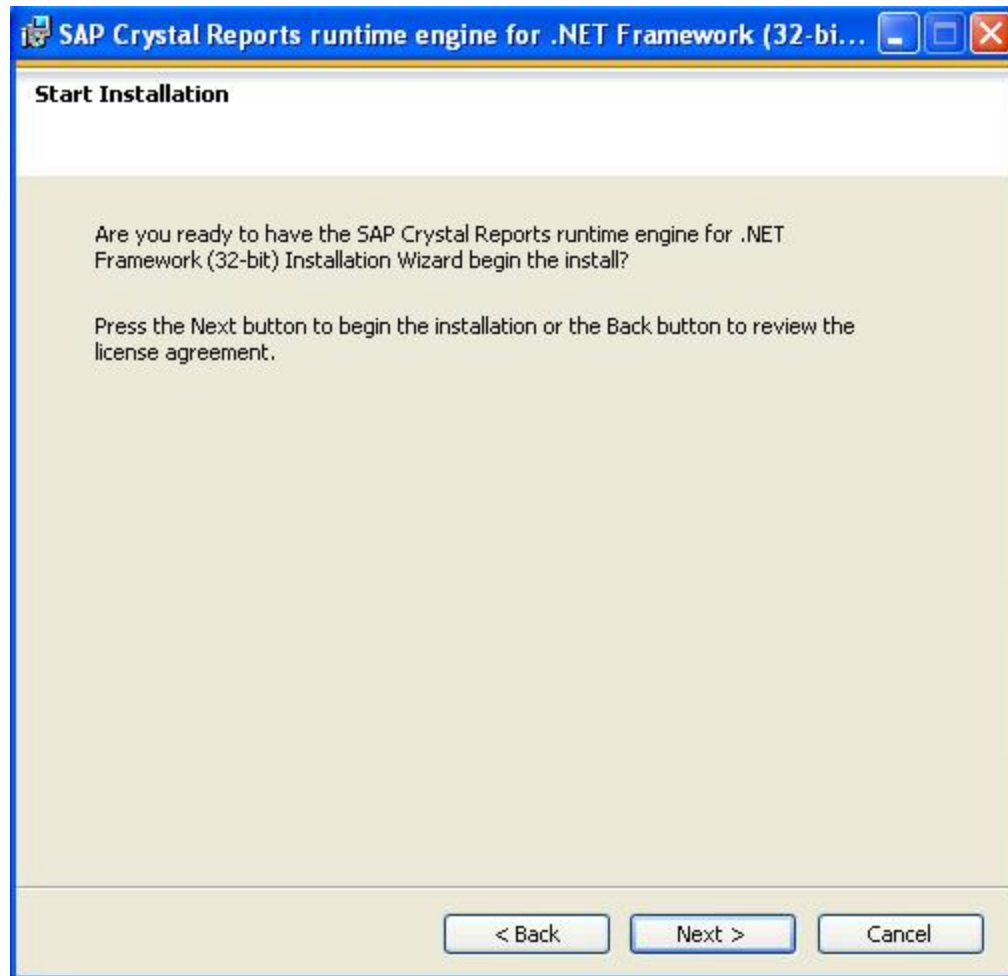
9. Click the Next button.



10. Select the option "I accept the License Agreement" then click the Next button.



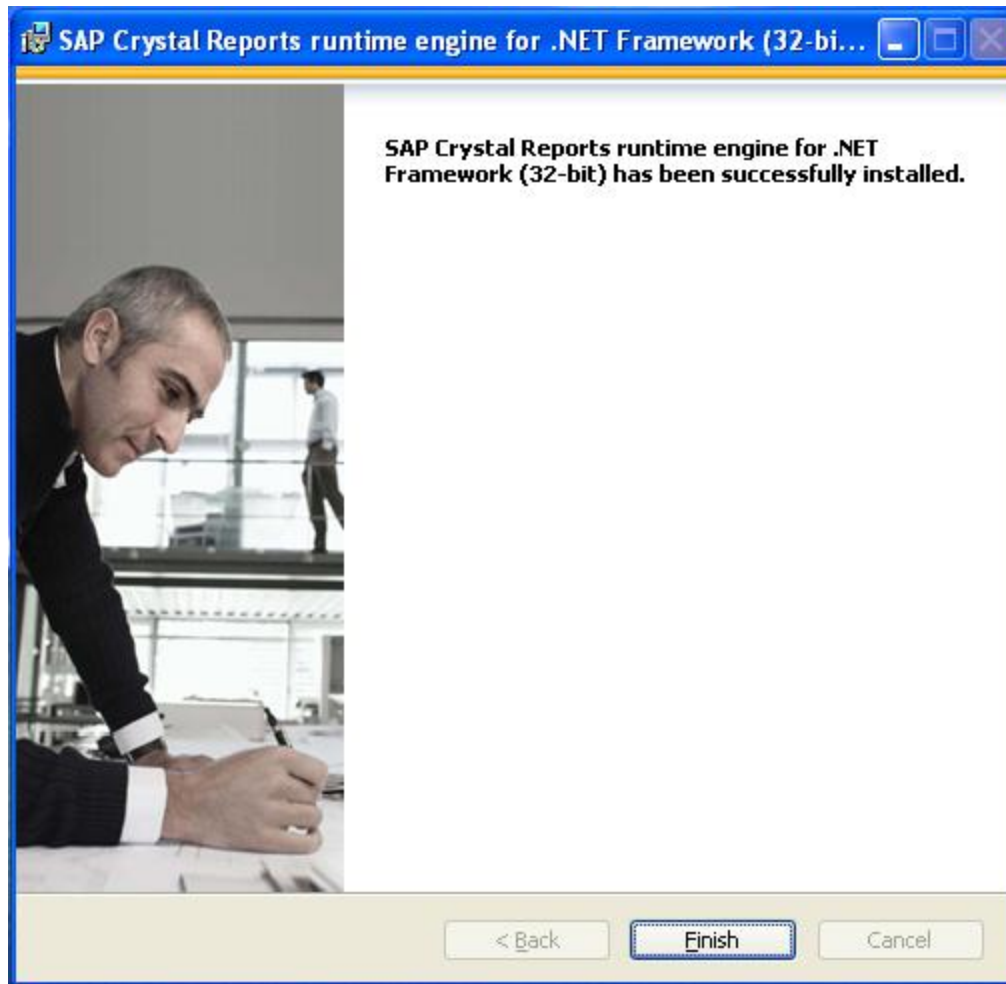
11. Click on the Next button.



Note:- Please wait while "Crystal Reports" installation process get completed.

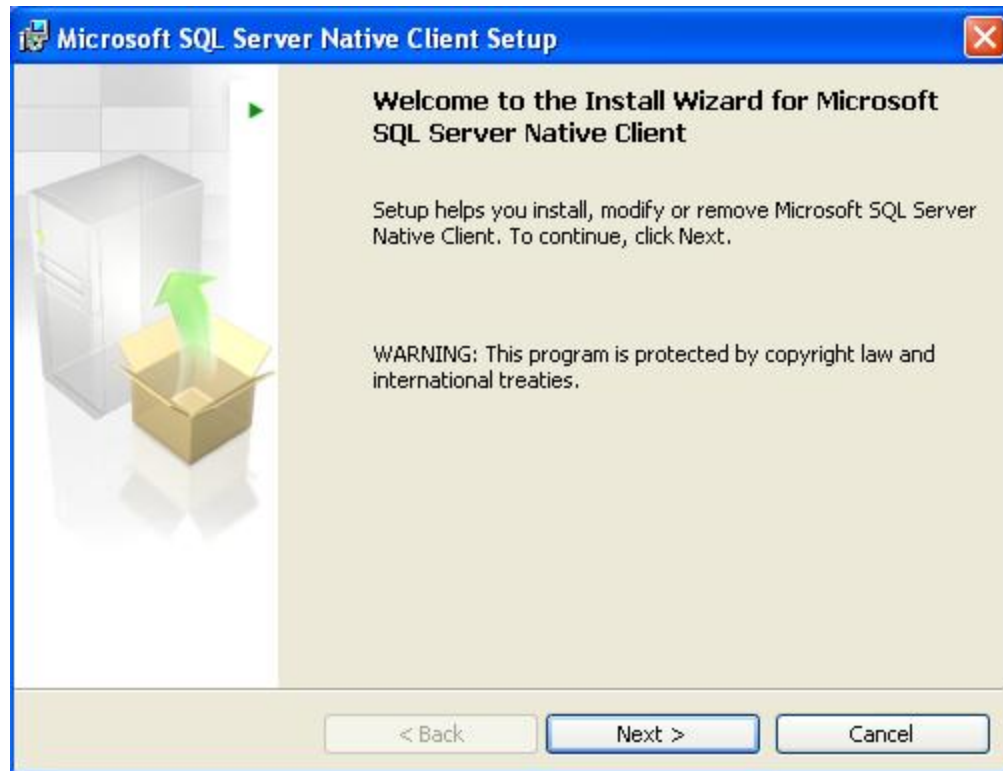


12. Click on the Finish button.

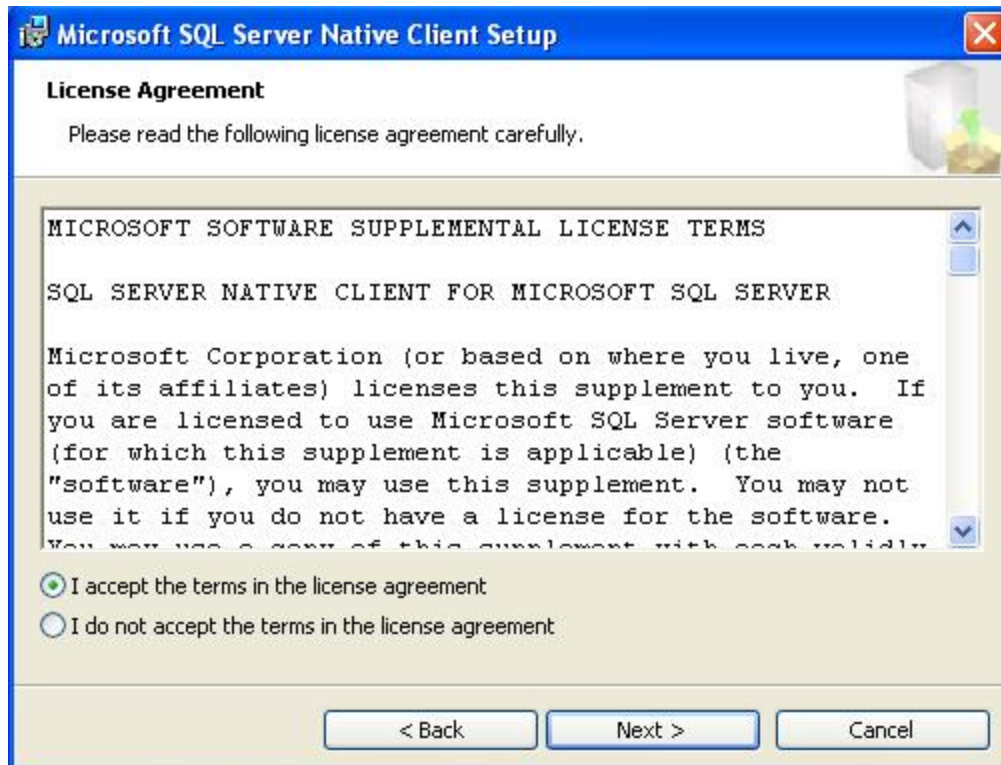


Note:- POSSiblePOS requires the “Microsoft SQL Server Native Client”, the setup program will check the existence of Microsoft SQL Server Native Client and will install if required.

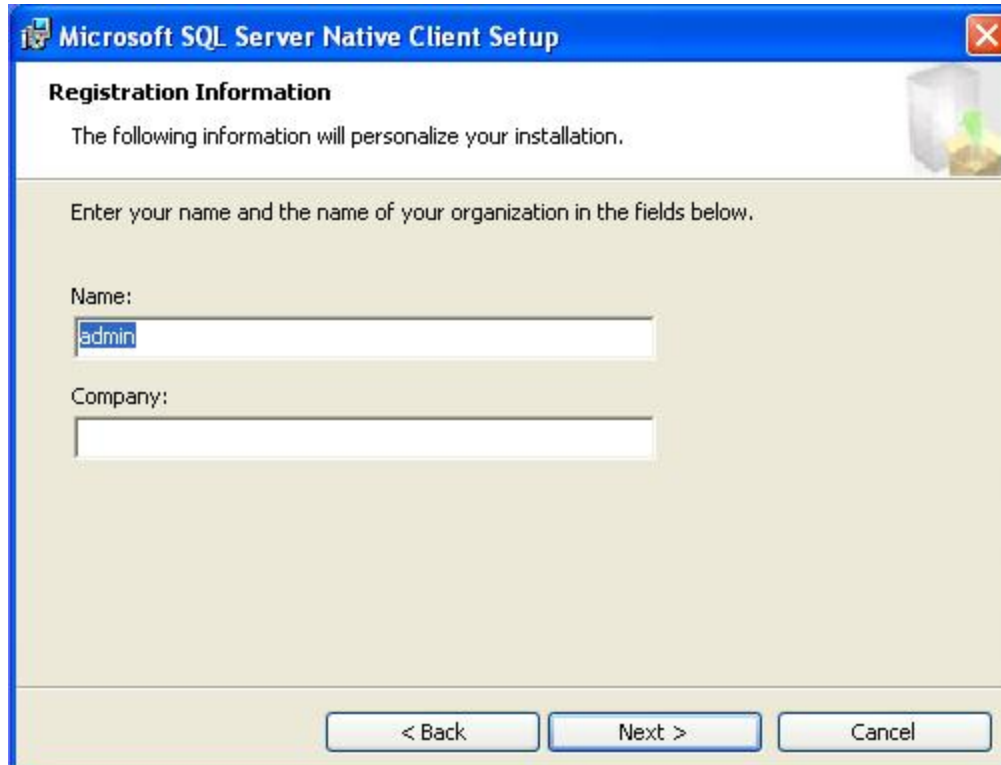
13. Click on the Next button.



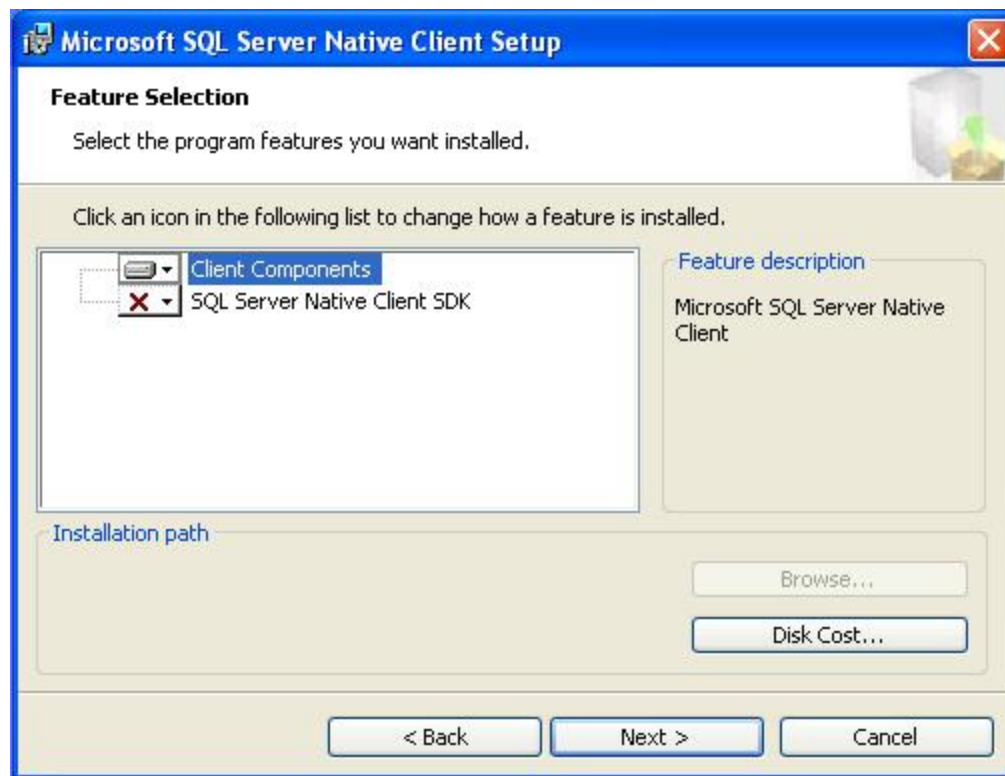
14. Select the "I accept the terms in the license agreement" option then click on the Next button.



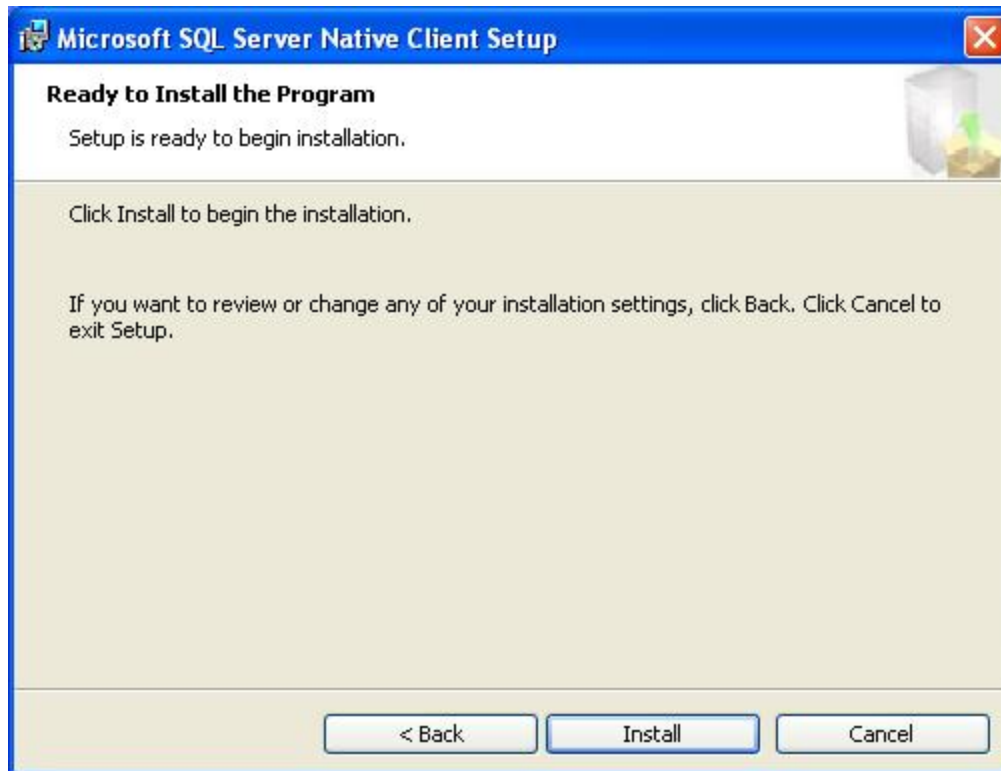
15. Again, click on the Next button.



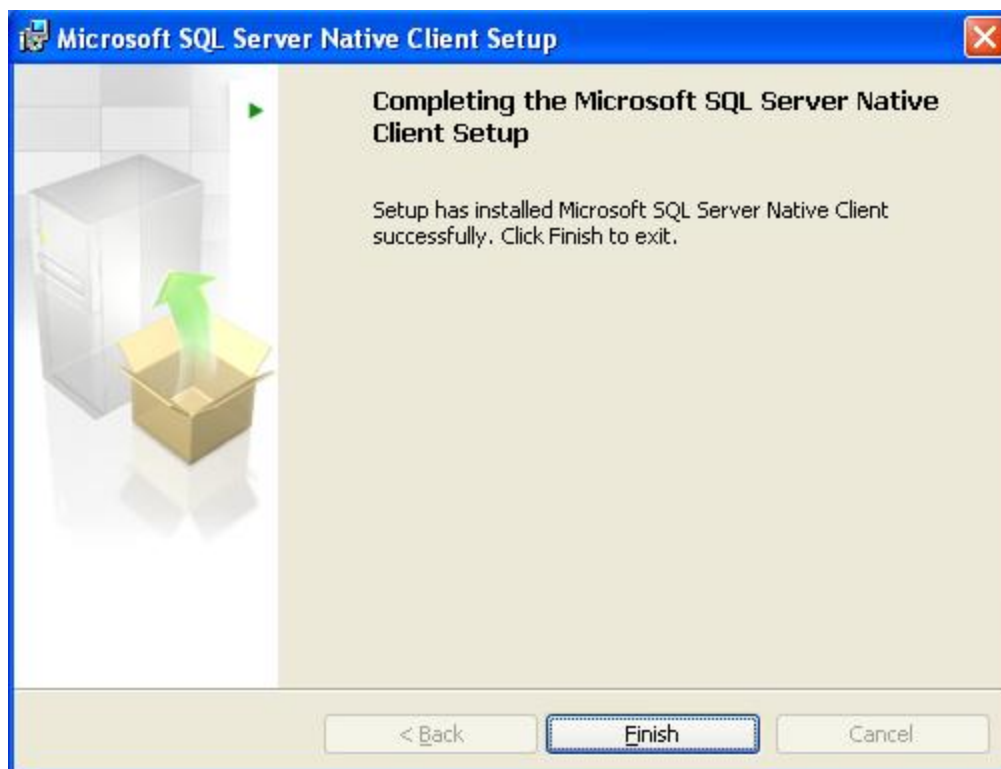
16. Click Next.



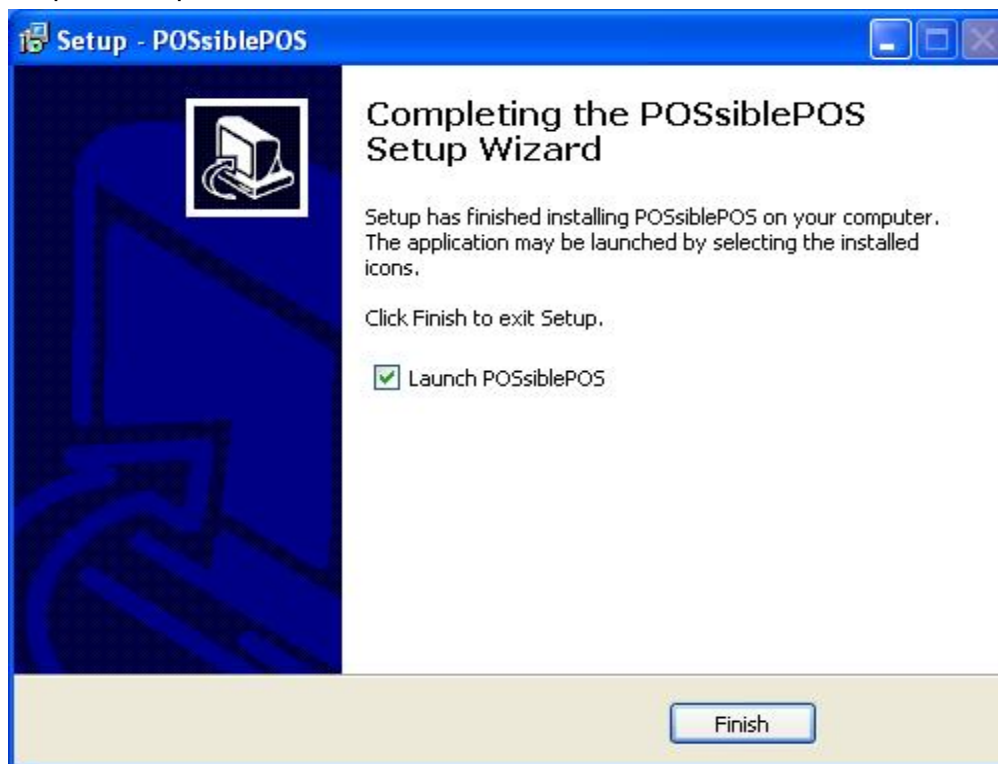
17. Click on the Install button.



18. Click on the Finish button.



19. Now all the required softwares are installed and you need to click the Finish button to complete the process.

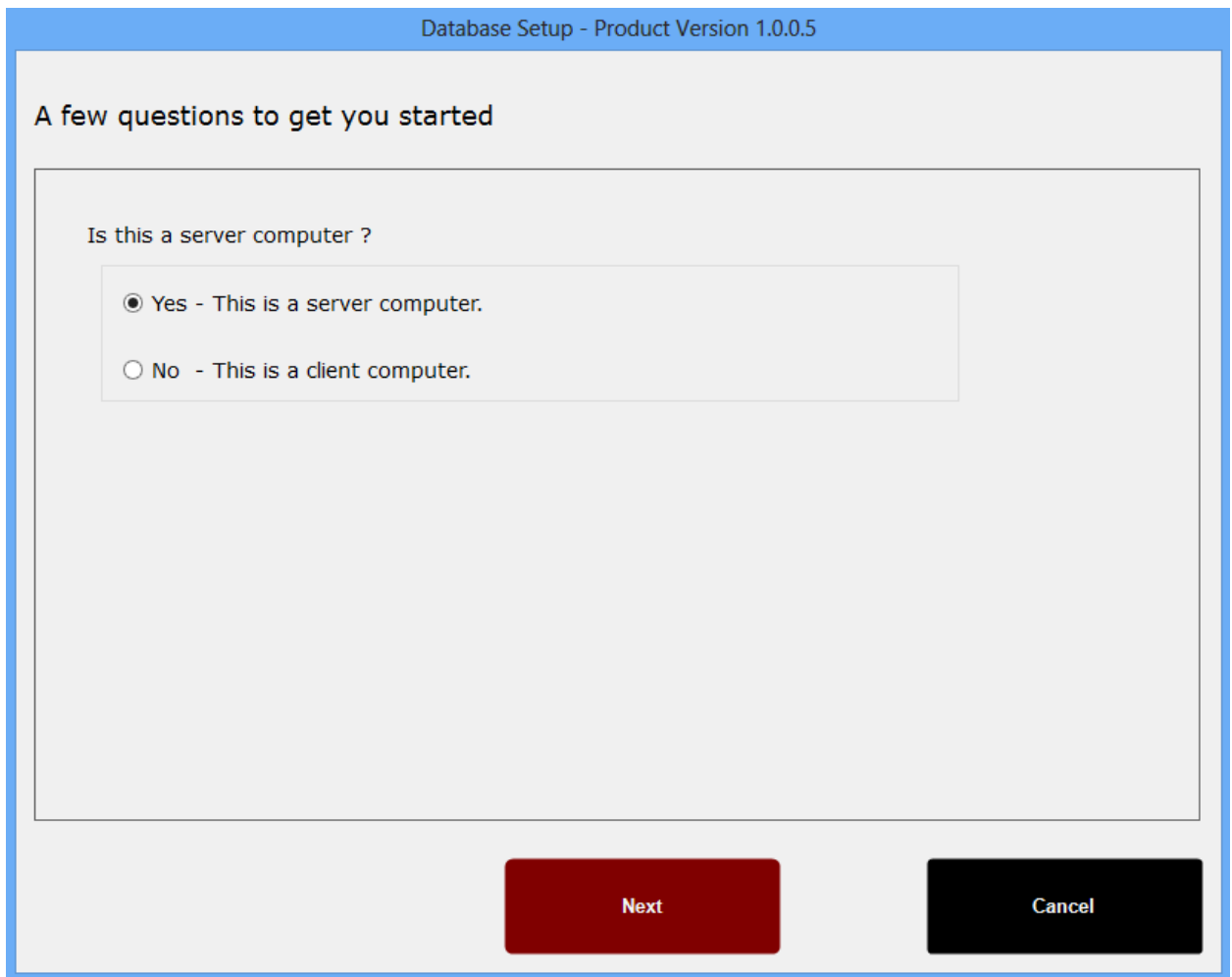


Initial configuration

Once you have finished the installation process and run the software for the first time, you need to do some basic configuration so that the software runs smoothly. Here is the guide for such configurations.

POSSible POS will ask you a few questions to get configured.

1. Select the type of your computer



Database Setup - Product Version 1.0.0.5

A few questions to get you started

Is this a server computer ?

☒ Yes - This is a server computer.

☐ No - This is a client computer.

Next Cancel

Screen 1.1

2. You can choose the option from above screen as in whether your system is a server system or a client system

Note : - You must have at least one server for POSSible POS setup. Server will contain the SQL Server database.

3. If you select 'Yes - This is a server computer' option then system will show two options to choose the setup file for SQL server 2008 R2 express.

Screen 1.2

Database Setup - Product Version 1.0.0.5

A few questions to get you started

Is this a server computer ?

☒ Yes - This is a server computer.

☐ No - This is a client computer.

Sql server is required for this system.

☐ Select the file from following location.

☐ Download and install from the vendor's site.

Browse

Next **Cancel**

Now you have 2 options

4. Select the file from following location: Choose this option if you have SQL Server 2008 R2 setup available within your computer or any other media.

Click browse button to select the setup file.

5. Download and install from the vendor's site: If you don't have setup of SQL Server 2008 R2 express then you can download it from vendor's site.

Option 1: Select the file from following location

Database Setup - Product Version 1.0.0.5

A few questions to get you started

Is this a server computer ?

☒ Yes - This is a server computer.

☐ No - This is a client computer.

Sql server is required for this system.

☒ Select the file from following location.

D:\Mitesh Prajapati\POSSible\Setup\SqlServer\SQLEXP

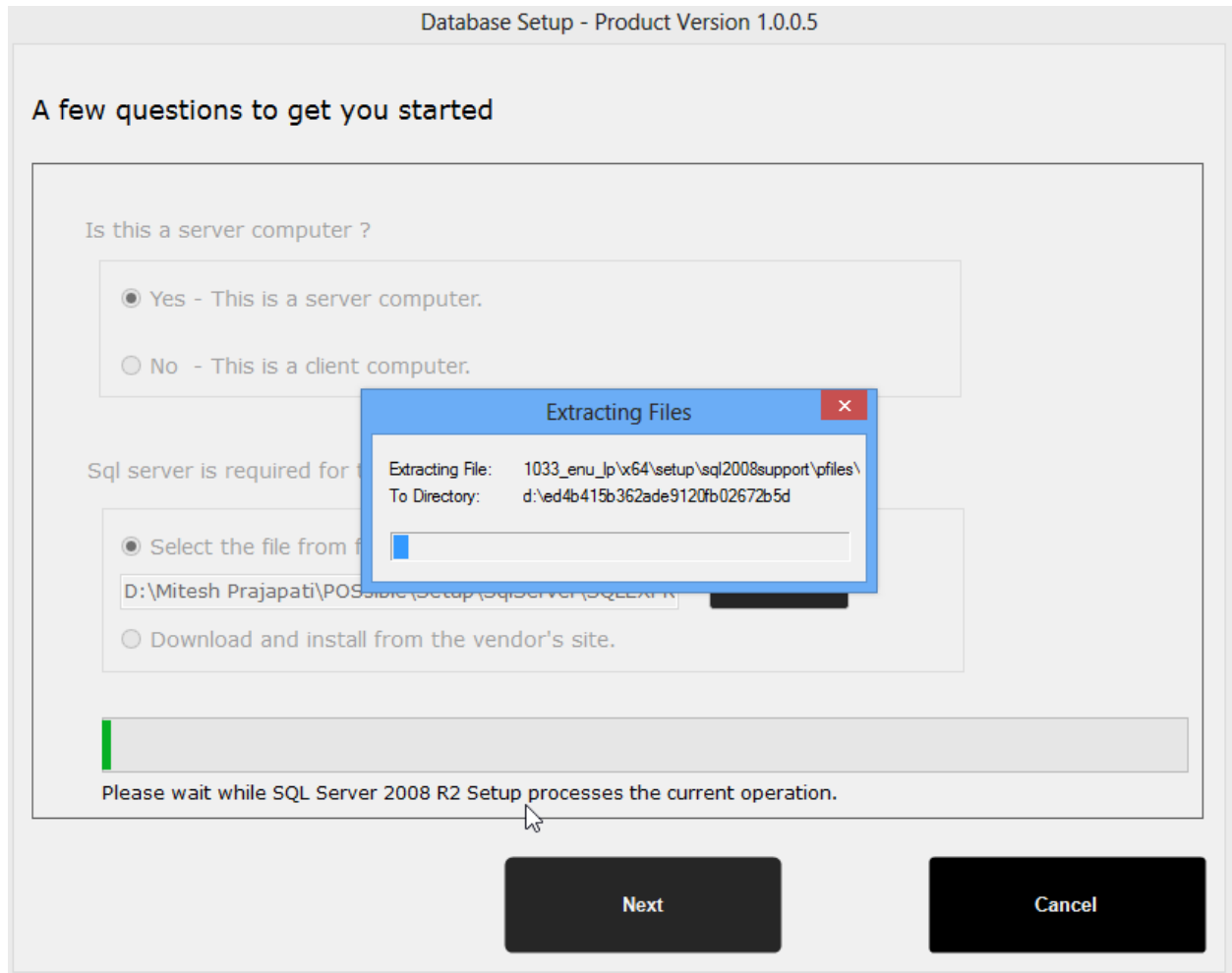
☐ Download and install from the vendor's site.

Browse

Next **Cancel**

Screen 1.3

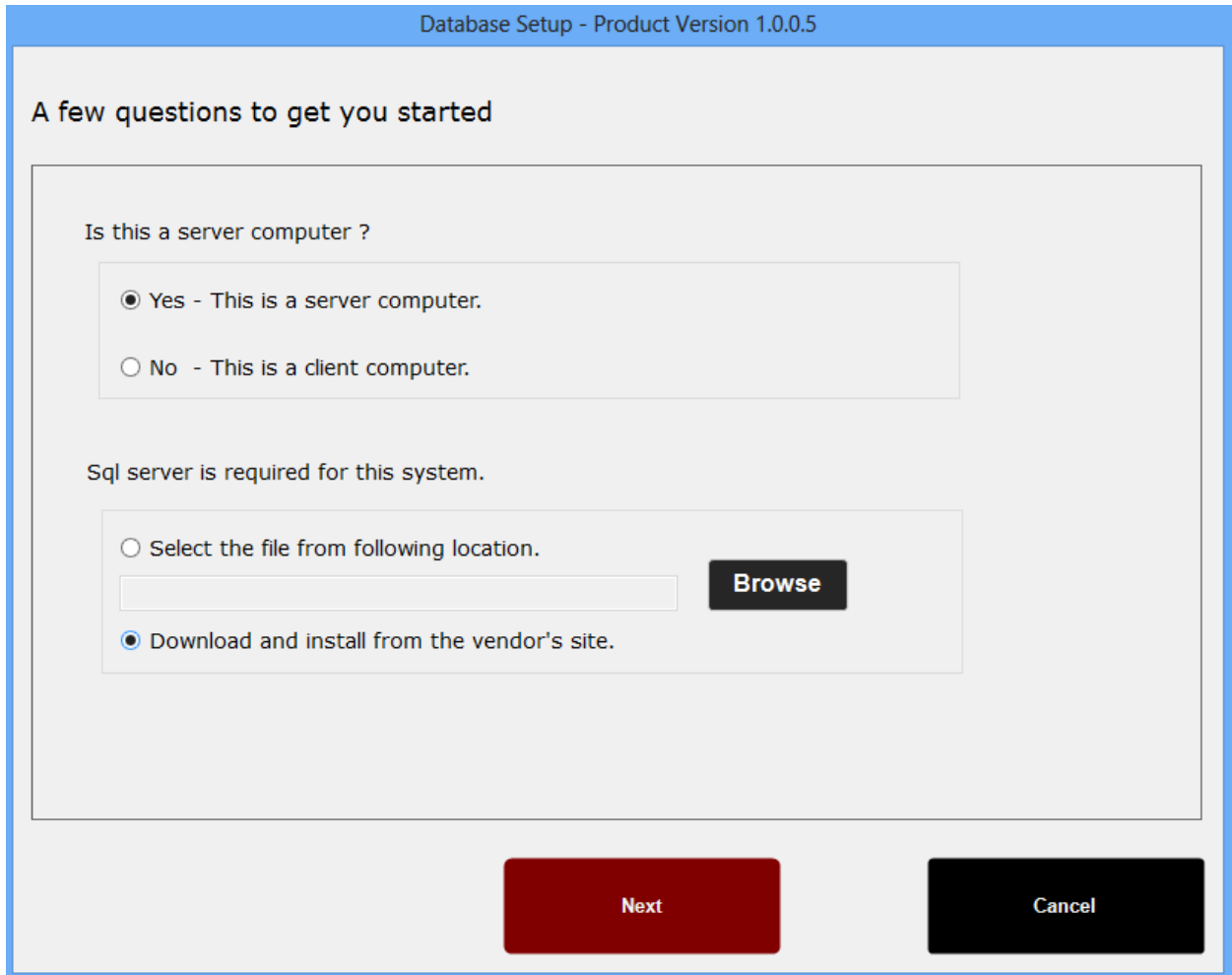
6. Now click the Next button and the system will install the SQL server 2008 R2 express on your system. Please follow the setup wizard steps as prompted by the SQL Server 2008 R2 express setup.



Screen 1.4

Now POSSiblepos will install the SQL Server 2008 R2 express and restart the application.

Option 2: Download and install from the vendor's site:



Database Setup - Product Version 1.0.0.5

A few questions to get you started

Is this a server computer ?

☒ Yes - This is a server computer.

☐ No - This is a client computer.

Sql server is required for this system.

☐ Select the file from following location.

☒ Download and install from the vendor's site.

Screen 1.5

7. Click the Next button to download the SQL server 2008 R2 express setup from the vendor's site.

Database Setup - Product Version 1.0.0.5

A few questions to get you started

Is this a server computer ?

☒ Yes - This is a server computer.

☐ No - This is a client computer.

Sql server is required for this system.

☐ Select the file from following location.

Browse

☒ Download and install from the vendor's site.

Please wait downloading in progress... (0% Completed)

Next **Cancel**

Screen 1.6

Now system will download the setup and install the SQL Server 2008 R2 on your system and it will restart the POSSible POS.

No - This is a client computer If you have selected this option (ref: screen 1.2) then the system will show you the under-pictured screen to select the server database You would need to enter the database connection configuration. For use- name and password, please contact your administrator or POSSiblePOS support team.

Database Connection - Product Version 1.0.0.5

Sever Name *

Database *

☐ Trusted Connection

User Name *

Password *

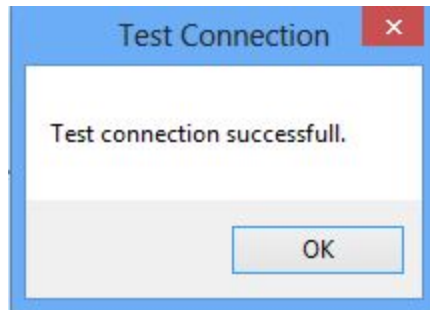
Test Connection **Save** **Cancel**

The administrator should be logged in to use trusted

Screen 1.7

10. In the above screen you will have to enter Server Name, Database, User-Name, and Password.

11. If you want to test the connection, click the Test Connection button [Recommended]. If your Server Name, Database, User-Name, and Password are valid, then you will receive the message 'Test connection Successful.'



Screen 1.8

12. Click OK and then click on the 'Save' button. This will save the database configurations.

13. Now you can see the login screen in which you have to enter User Id and Password. POSSible POS comes with default user **01** and the password is **222222**

A "Log In" window with a blue title bar and a close button (X) in the top right. The window contains a lock icon and the text "Log In" in red. Below this, there is a "Software Type" dropdown menu currently set to "Restaurant". Underneath are two input fields: "Enter User Id" and "Enter Password". The "Enter Password" field has a red asterisk and a red note below it that says "Enter only numeric". At the bottom, there are two buttons: "Cancel" (red) and "Submit" (black). In the bottom left corner, the date and time "2/14/2014 11:28:01 AM" are displayed. In the bottom right corner, there are two more buttons: "Database Utilities" (red) and "Change Database Connection" (red).

Screen 1.9

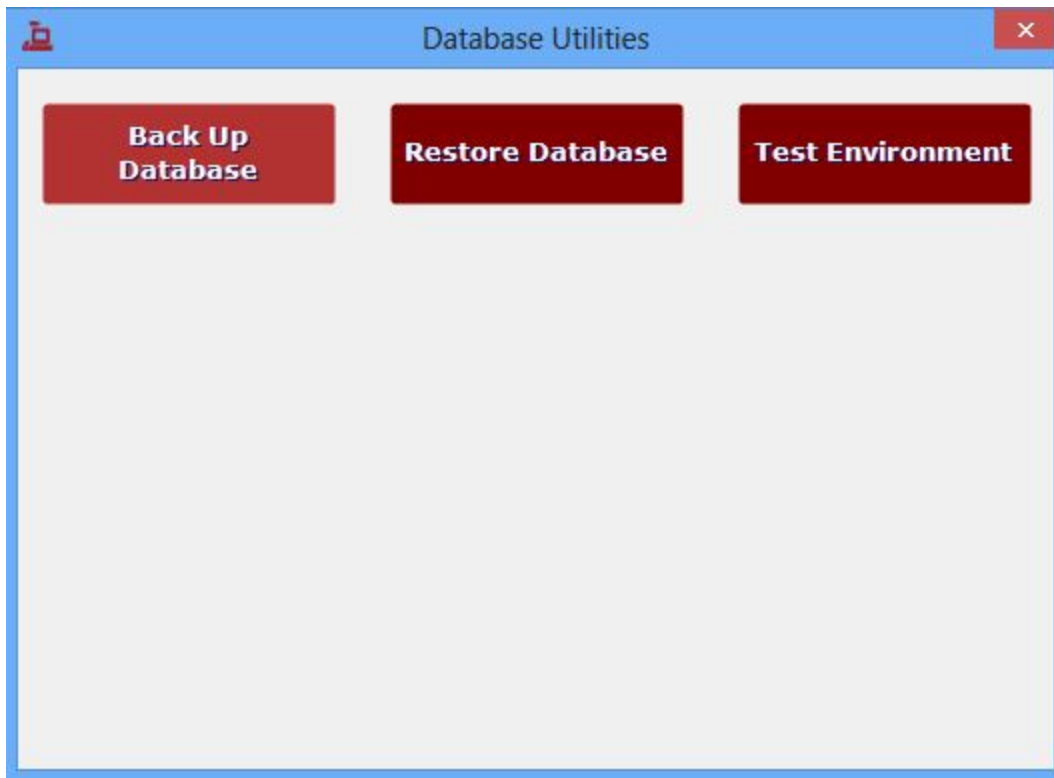
Database Utilities:

This section allows 3 operations

- 1 Backup Database
- 2 Restore Database
- 3 Test Environment

Note: You can see Database Utilities button only if your computer is a server computer.

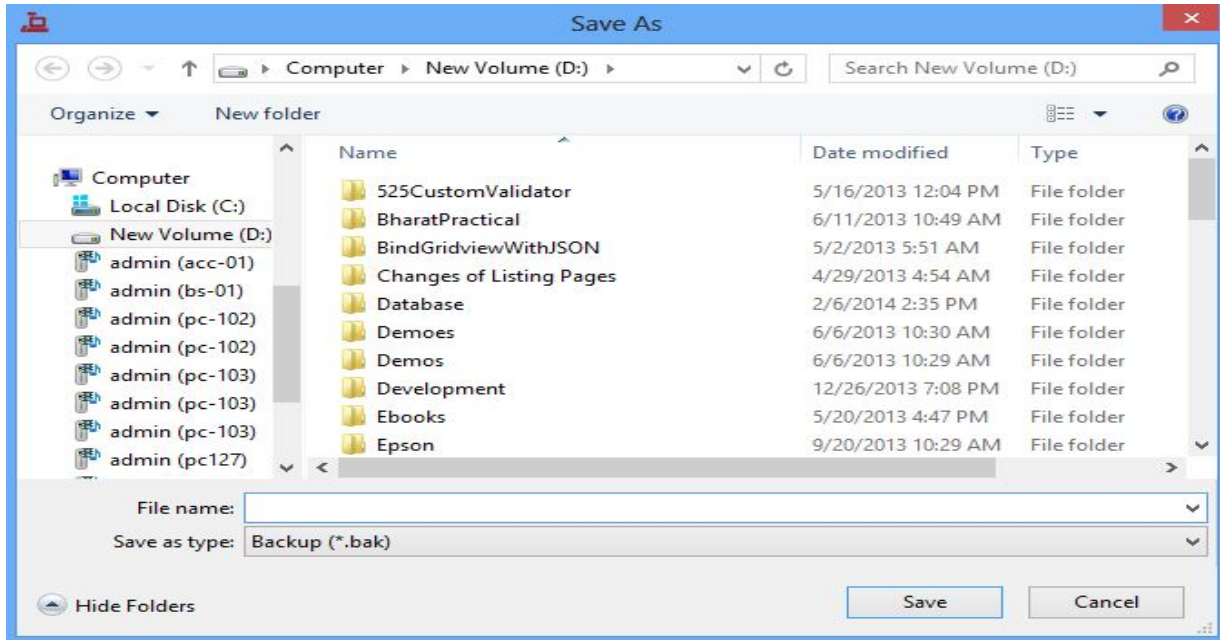
1. Click the “Database Utilities” button.



Screen 2.1

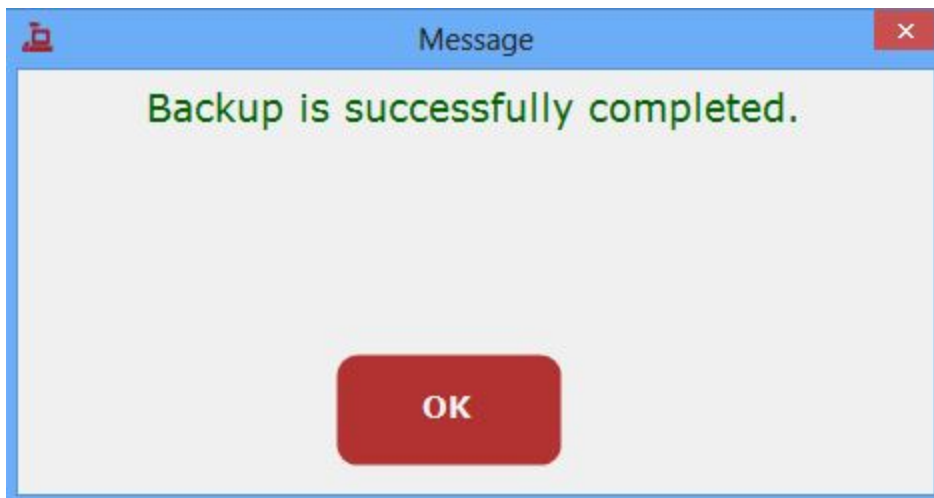
Back-Up Database:-

1. Click the Back-Up Database button to create the database backup.



Screen 2.2

2. Select the location where you want to save database backup files. Enter the file name and click on the Save button.



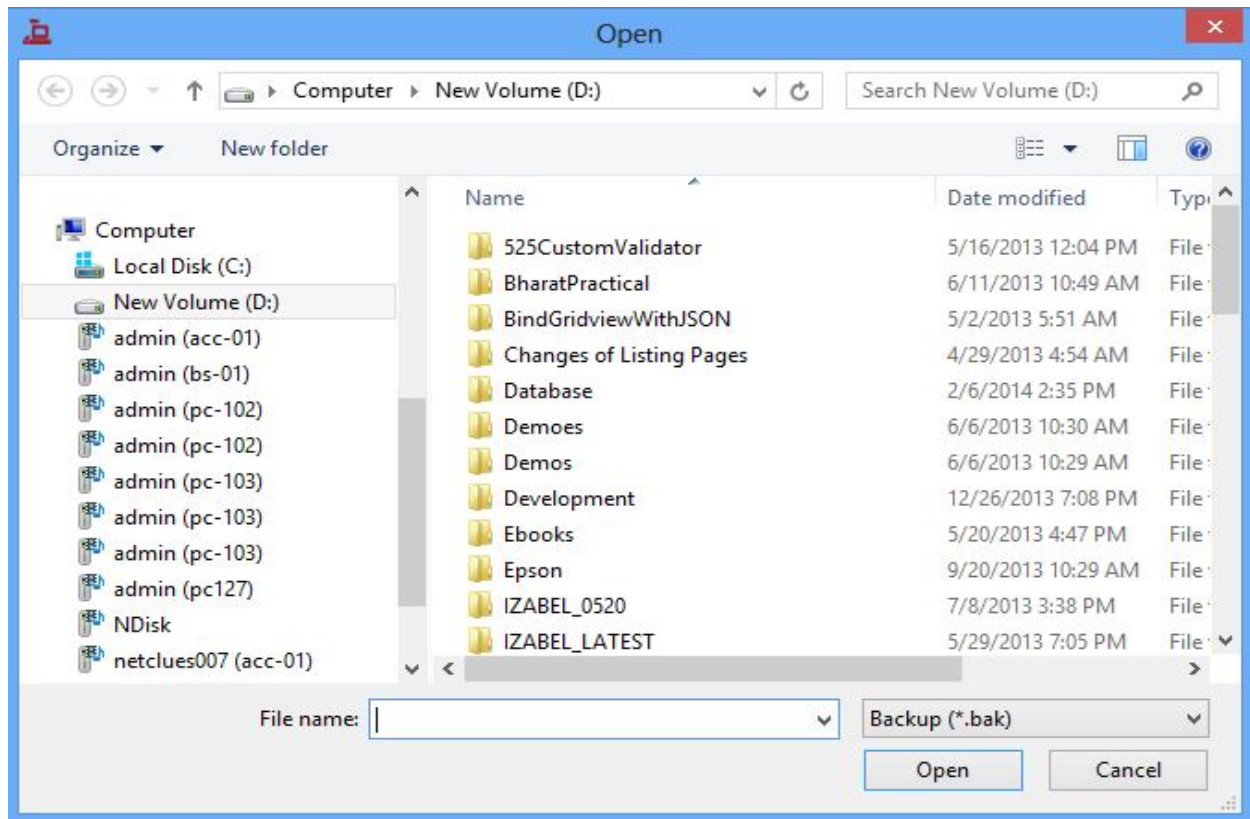
Screen 2.3

Restore Database:-

1. Click the Restore Database button if you want to restore the backup file which you created earlier.

Note:

1. You should close all your client POSSible POS softwares before restoring database.
2. Restoring database should be done by the Administrator user only.



Screen 2.4

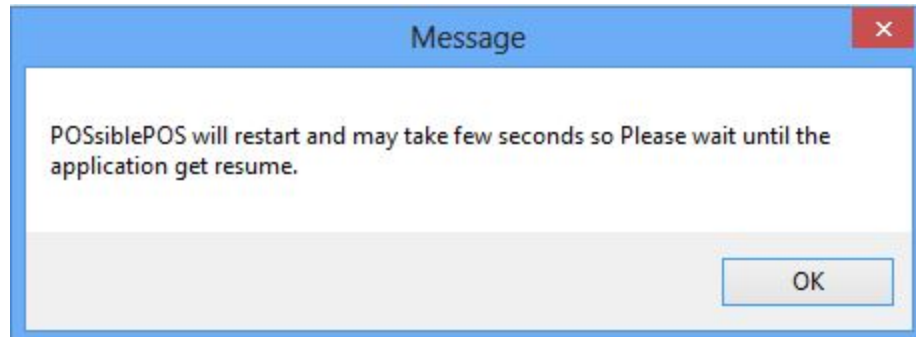
2. Select a back-up file from your system and then click on the Open button.



Screen 2.5

Test Environment:-

1. This feature is useful in case you want to explain the software to someone. Click the “Test Environment” button it will create the new test database and switch to that test database. Any transaction done during test environment will not be considered in live database. You should switch to live environment after finishing your test work.

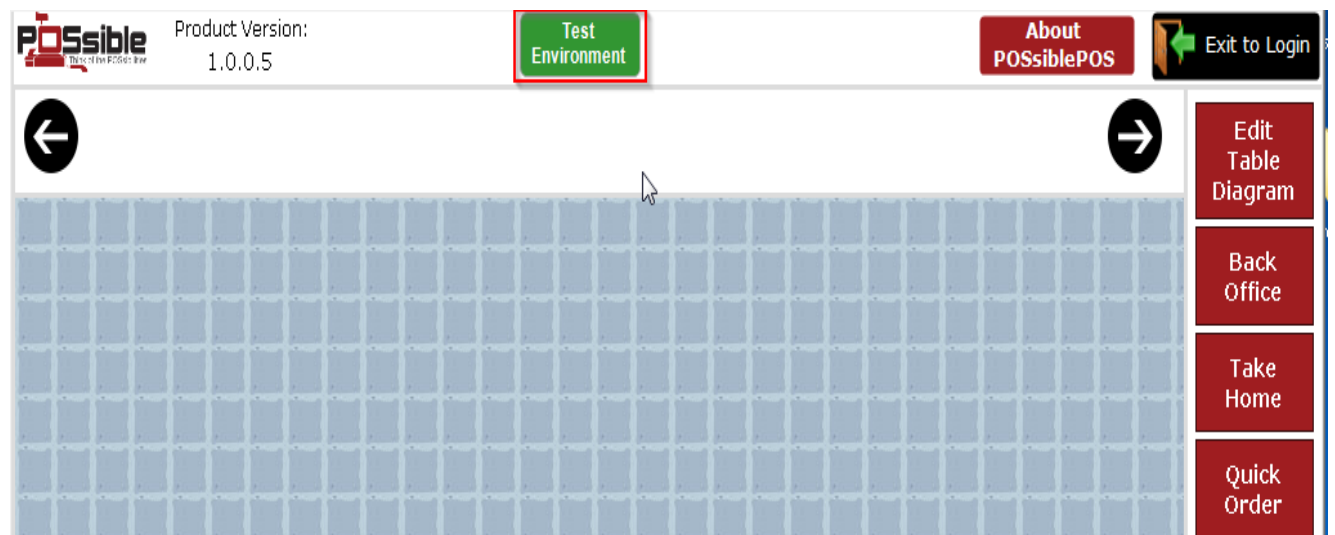


Screen 2.6

2. Click the “OK” button and your application will restart in a few seconds.

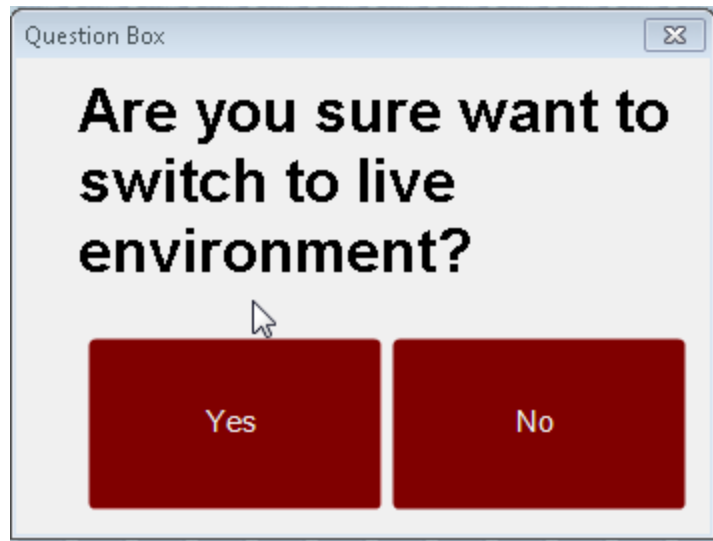
Switch to Live environment

After finishing your task in test environment you should switch to live environment. Click the Test Environment button at the top-centre of dashboard.



Screen 2.7

System will prompt a confirmation button to switch to live environment. Click the Yes button.



Screen 2.8

Thank you for reading Installation User Guide.